

PRECISION OPTICS FOR PRECISION SHOOTING



**NIGHTFORCE™**



## You cannot buy a higher quality riflescope.

That's a strong claim, without a doubt.

But, it's a claim we can prove. And our customers *do* prove it...every day, under some of the harshest, most unforgiving conditions on earth.

We didn't start building scopes and expect people to find uses for them. Instead, we looked at real-world needs. Needs that were not being met by other optics. And created, from the ground up, the ultimate precision instrument for the intended application.

You can tell the difference the moment you pick one up. And if you could look inside a Nightforce scope, the differences would be even more obvious.

Fortunately, just looking *through* one will tell you just about everything you need to know.

**All air-to-glass surfaces** receive our proprietary broadband multi-coating; applied to tolerances of 1/4 wave deposition or .000005 inches, exceeding the toughest Mil-Spec abrasion test. You will see the difference in low-light situations.

**Every lens in a Nightforce scope** is matched and aligned by hand perfectly to its partners. This technique, called optical indexing, yields the highest possible optical performance. Because it takes time and considerable expertise, many manufacturers don't bother. We've done it this way since the beginning.

**A scope's objective lens** determines resolution, light transmission and exit pupil size. To maximize these attributes, every Nightforce objective lens assembly utilizes a multi-element design like those found in the highest quality telescopes. Our lens system focuses light rays more precisely for exceptional image clarity and color accuracy.

**Nightforce tubes** are machined from solid bar stock 6061-T6 aircraft-grade aluminum alloy, not extruded or formed like those found on lesser scopes. They are two to three times thicker than other riflescopes. This means less overall stress, greater thermal stability, a consistent zero and a virtually impervious shield for the precision optics within.

**Glass-etched illuminated reticles** are standard with every Nightforce scope.

**Sand, dust, mud, heat and cold** are a few of the environmental challenges every Nightforce scope faces in its development. Every aspect is thoroughly tested, proven, and tested again before we build a final product. Anything you can inflict upon a scope, you can be certain we've already done it first.



**The spring that maintains pressure on our elevation and windage adjustments** spends two weeks in a polishing tumbler before going into a Nightforce scope, to assure there are no rough spots or burrs to interfere with perfectly smooth operation. It is made of pure titanium, the only known metal in the world that can be repeatedly compressed and held in place, even for years, without developing fatigue or "memory." This guarantees zero loss of integrity, zero loss of repeatability. It is many times more expensive than comparable springs found in most scopes. But, we are not concerned with a few dollars. We are concerned with building the best riflescope.

**The terms "rugged" and "precision optics"** are usually not compatible. Any optical instrument built to highly exacting tolerances and absolute alignment is by its very nature a delicate device.

Not so with Nightforce. The design of our scopes is unique within the industry, allowing us to combine optics of extraordinary precision with construction that will withstand repeated recoil from the largest calibers, extreme shock and severe temperature changes.



**We machine the screw that controls elevation adjustments** to an unbelievable 110 threads per inch. It is so precise that it must be mated to its receiver by hand. Why go to so much trouble? Because we consider backlash clearance of more than 1/30 the thickness of a human hair unacceptable.

**Turret adjustments** are made with specially treated hardened metals, and advanced dry film lubricants and surface-hardened brass silicone bronze are used to ensure a lifetime of wear resistance and reliable performance. This combination is not the easiest way to build a scope. It is, however, the best way to build a scope...providing a lifetime of repeatable accuracy.

**Lenses are painstakingly bedded** with our own proprietary Mil-Spec formulation. Unlike methods used by most other scope manufacturers, with our bedding process there is no glass-to-metal contact that can result in breakage, stress or misalignment over time. Our process is 100% permanent, guaranteeing perfect optical alignment for as long as you own your Nightforce scope.

**The optical elements** within an NXS scope are hand-bedded with our own proprietary Mil-Spec bonding agent, then cured at 160° F for 24 hours. Lenses are further secured with o-rings and machined metal lock rings, both fore and aft. This zero-tolerance lens securing method prevents any movement of

the optical elements in any direction, under any circumstance. This permanent bonding assures a lifetime of uncompromising performance and reliability, confirmed with front and side impact testing on every scope we build.

# WHAT SOME COMPANIES CALL CLOSE TOLERANCES WE CALL INTOLERABLE.



### 3.5-15 x 50 NXS

Military & law enforcement  
Long-range hunting

Originally developed for use on military small arms, the 3.5-15x50 NXS allows a lower mounting profile. A practical magnification range and large field of view make it an invaluable scope for professionals and serious hunters as well.

A full 110 MOA of internal adjustment make both 3.5-15 models extremely versatile in the field and applicable to a wide range of applications.



### 3.5-15 x 56 NXS

The top choice for law enforcement snipers. A large objective lens increases resolution and exit pupil size for quicker target acquisition and optimal light performance in twilight conditions...an especially useful configuration for tactical teams that may not have a dedicated night vision scope. This superior optical design also benefits hunters and sport shooters who want a scope to perform in the shadows. It offers a full 110 MOA of adjustment and a practical magnification range. A large field of view allows the shooter to recover quickly from recoil for a second shot.

Military & law enforcement  
Long-range hunting



**Mil-Radian target turrets** are an option on Nightforce 3.5-15 NXS scopes. These provide precise Mil-Radian angular units of measure for both windage and elevation, an ideal interface with our Mil-Dot or MLR reticles. Adjustments are calibrated in 0.1 mil. click values and 5.0 mil. per revolution, allowing an easy return to zero.

## CREATED FOR PEOPLE WHOSE LIVES DEPEND ON THEIR SCOPE.

**Our scopes are subjected to abuse during product development** that would quickly destroy lesser optics. Pre-production scopes are tested in a pressure tank simulating 100 feet of water for 24 hours, ensuring absolute waterproof integrity. We test thermal stability by freezing them to -80° F, then heating them to 200° F within a one-hour period. Function is checked at both temperature extremes. Recoil and impact are tested at 1,250 Gs for both positive and negative forces.

Before it is shipped to a customer, *every* scope is completely inspected and checked at over 70 different points. A battery of tests, including forward impact, side impact, tracking accuracy and resolution integrity. These are but a few of the steps we take to insure absolute quality before any scope leaves our facility.

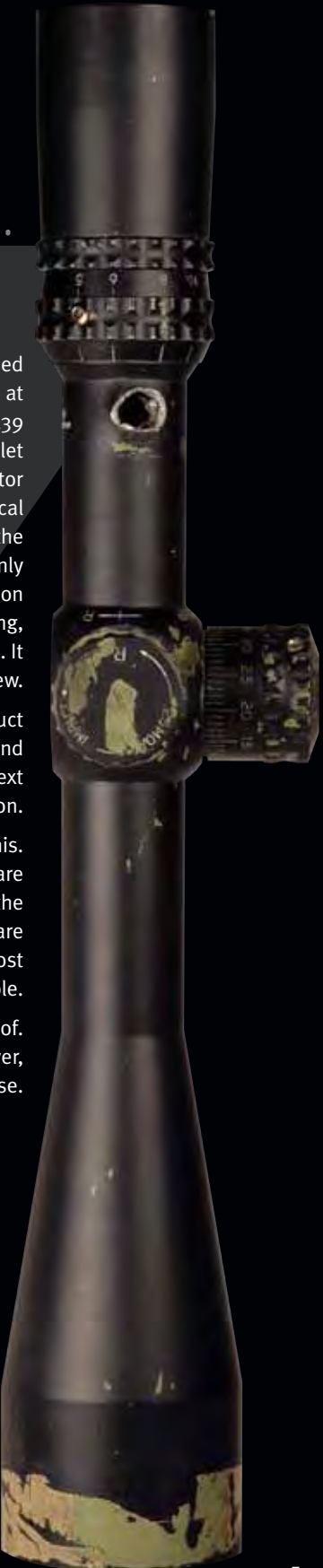
Whatever you think you might do to your scope, chances are we've already done it.

**The hole you see** in the well-used Nightforce 3.5-15x50 NXS scope at right was made by an enemy 7.62x39 round fired at a U.S. soldier. The bullet completely penetrated the erector tube—the heart of the scope's optical system. We're happy to report that the soldier was not injured, and the only casualty is the scope's magnification ring, frozen on 15x. Its focus, tracking, and all other functions work just fine. It holds point of aim like new.

The soldier wrapped the scope in duct tape to keep out sand and dirt, and used it without a problem for the next three days, completing his mission.

We receive many stories like this. Because Nightforce riflescopes are used in active theatres by most of the elite special forces worldwide, they are subjected to—and survive—the most brutal conditions imaginable.

We won't say they're bulletproof. There is at least one soldier, however, who would argue otherwise.







Once again, using Nightforce scopes, the USAMU Service Rifle Team cleaned house at the 2008 Interservice Highpower Championships and 2008 NRA Long Range Championships:

- First, second and third place/600 yard Division B (any rifle, any sight), including a new match record for SFC Lance Dement
- First, second and third place/1000 yard Division B
- First, second and third place/Long Range AGG, including a new match record for SGT Brandon Green
- First, second and third place 2008 Wimbledon Cup
- 1000 yard Division B Team Match (USAMU Praslick team)
- Herrick Team Trophy, also to ASAMU Praslick

USAMU shooters have taken the Wimbledon Cup in 2006, 2007, and 2008. The Praslick team has won the Herrick Trophy in 2005, 2006, 2007 and 2008, including breaking a national record in 2006 that had stood for over 20 years.



*"I'm sending a few pictures of my latest hunt in the Sand Hills of Nebraska. You can see why we offer the Nightforce NXS as the exclusive scope on our CZ 550 Ultimate Hunting Rifle."*

—Alice Poluchova  
President, CZ-USA, Inc.



**Mil-Radian target turrets** are an option on Nightforce 5.5-22 NXS scopes. These provide precise Mil-Radian angular units of measure for both windage and elevation, an ideal interface with our Mil-Dot or MLR reticles. Adjustments are calibrated in 0.1 mil. click values and 5.0 mil. per revolution, allowing an easy return to zero.

#### When is "long range" too long?

Because high-magnification Nightforce scopes were originally designed for highly trained professional sharpshooters, they are capable of remarkable accuracy at extreme distances. For the hunter, this means that killing shots at game previously "out of range" are now possible...but only if the hunter is intimately familiar with his rifle, his loads, rangefinding techniques, and after extensive practice. Nightforce scopes will put extreme long range capability in the hunter's hands. It is up to the hunter to use this capability wisely and ethically.



# BUILT FOR PROFESSIONALS. SO YOU CAN SHOOT LIKE ONE.



Military & law enforcement  
Long-range hunting

## 5.5-22 x 50 NXS

Originally developed for the U.S. military's extreme long range shooting and hard target interdiction, both 5.5-22 Nightforce models provide a broad magnification range, four inches of eye relief and 100 MOA of elevation travel. These characteristics have proven highly appropriate for the .50 BMG, allowing shooters to accurately reach to 2000 yards and beyond. It retains a slim profile and is easily adaptable to a wide range of mounting systems. The superb resolution at high magnification also opens an entirely new world of extended range for the accomplished marksman.

*"I purchased a Nightforce 5.5-22 x 56 in 2001. I used it to put 12,500 shots through two .50 BMGs. I fired another 4000 shots with it on an AR10. Then, I mounted it on a 14.5/114mm Russian (570 gr. of powder propelling a 1000 gr. bullet at 3300 fps) and fired 970 rounds. Most scopes break within one to ten shots on the Russian... not the Nightforce. Then I used it for another 47 rounds through a 25mm Hotchkiss, 3000 through a Barrett M90, and 6000 rounds from a Savage M250.*

*"After six years and all this punishment, the zero settings on the 5.5-22 have never changed and it still works perfectly.*

*"Nightforce is the best I have ever used."*

—Kent A. Lomont  
Manufacturer and dealer of machine guns and destructive devices

*Below: the .50 BMG (top) compared to the 14.5/114 Russian.*



## 5.5-22 x 56 NXS

The ultimate long range scope. Its 56mm objective lens provides maximum clarity and resolution across the entire magnification range. The most advanced field tactical scopes ever produced, the wide magnification factor of our 5.5-22 series allows precision accuracy at the longest ranges, yet at 5.5 power remains highly effective for shots at close ranges. Nightforce was the first company committed to perfecting extreme magnification variable power scopes. Our years of experience perfecting long-range optics is evident in every scope we build.

Military & law enforcement  
Long-range hunting



## 8-32 x 56 NXS

Varmint shooting  
Target shooting  
Extreme long range

Since 1992, Nightforce has been a winner in countless benchrest competitions. We have taken that knowledge and success and combined it with the durability and features of our NXS line to create the ultimate long-range field and target scopes. Evolved from our tactical line, the 8-32 x 56 and 12-42 x 56 offer fast adjustments for precise, repeatable shot placement. The extremely high magnification ranges mean there is now virtually no target outside the capable shooter's reach.

## 12-42 x 56 NXS

The highest magnification scope we make. It provides optical resolution comparable to the highest quality spotting scopes and unsurpassed clarity across the entire magnification range.

Both the 8-32 and 12-42 utilize 56mm objectives specifically designed for optimum resolution under all conditions—even at the highest magnification. In the past, accomplished long-range shooters could only wish for a scope equal to the capability of modern flat-shooting calibers. The question now becomes, does your rifle measure up to the 12-42 x 56 NXS?

Varmint shooting  
Target shooting  
Extreme long range

# NOW THE QUESTION BECOMES: DOES YOUR RIFLE MEASURE UP TO OUR SCOPE?

It might come as a shock to the shooter who has just invested a small fortune in a fine rifle, but the fact is that a Nightforce scope is built to tolerances vastly more precise than those found in the best rifles money can buy.

Why? Because even the slightest error in a riflescope's construction will be magnified dramatically as range and power settings increase; and evident in a constantly shifting zero and frustrating lack of repeatability.

Quite simply, to achieve the absolute maximum accuracy from your rifle, your scope must be as close to perfect as possible.

Less precise riflescopes can—and will—fail to match the potential of a well-made firearm. With Nightforce, whatever your rifle is capable of, your scope will more than measure up.



SGT Brandon Green, winner of the 2008 and 2007 Wimbledon Cup national championships as part of the USAMU Service Rifle Team. He also set a new match record in Long Range AGG, took first in 1000 yard Division B, and second in 600 yard Division B at the 2008 Interservice Highpower Championships, all with Nightforce.

We put our heart and soul into building the ultimate optical instruments, and we're extremely proud of the long-standing commitment of competitors like Sgt. Green to Nightforce. After all, we're shooters, too. And we like to win as much as anyone does.



**Nightforce compact NXS models prove** that a riflescope needn't be large and bulky to be highly efficient. Not that building a small scope offering high performance is easy. Like a fine watch, tolerances, materials, and optical design must be as close to absolute perfection as humanly possible. Few companies have the skill, the resources, and the desire to create such a precision instrument. Our compacts were originally designed for—and are still in use by—the U.S. Special Forces, whose demands are uncompromising. When you hunt with a Nightforce compact, you won't be making any compromises, either. All you'll be giving up is bulk, weight, and inconvenience.

**Why are there so few scopes on the market** offering variable magnification beginning at one power? It is extremely difficult to build a true 1x variable scope while maintaining absolute optical integrity and alignment throughout the entire magnification range. Having the option of one power—zero magnification—makes our 1-4 x 24 NXS the only true substitute for open sights on a dangerous game rifle... invaluable for older eyes and to the hunter wanting to maximize the effectiveness and range of a big-bore firearm.

## 1-4 x 24 NXS

If hunting big, dangerous game is your passion, there is no better scope on the market to keep the odds in your favor. Its low profile complements big bore bolt action and double rifles. At 1 power, it is as quick as open sights and vastly more precise, allowing you to shoot with both eyes open. Your field of view is a full 100 feet at 100 yards, providing instant target acquisition and precise shot placement. It is designed for hunting dangerous game at close quarters, in dense brush, and for running targets. It is one of the few scopes in the world that will withstand repeated recoil from the largest magnum calibers.

Dangerous game  
Military and law enforcement  
CQB applications  
Tactical competition

**1** Nightforce compacts are available with two types of adjustment turrets:

1. Fully enclosed with caps (shown with caps removed at left; caps installed on 1-4 x 24 and 2.5-10 x 24 at right). Windage and elevation controls are easily adjusted with fingertips.
2. Exposed tactical-style turrets standard with Nightforce ZeroStop and windage limiter technology. With ZeroStop, after sighting in your rifle you can lock your zero to any one of the 400 elevation clicks, then return instantly to absolute zero by feel, regardless of how many elevation adjustments you have made. Your choice depends upon the type of shooting you do and whether or not you need instant access to all adjustments.

Reticle FC-2

Reticle NP-1

**Illuminated reticles** are standard with every Nightforce scope. Nine illumination levels are easily controlled by a third turret on the left side of NXS compact scopes.

# NIGHTFORCE COMPACTS. BUILT TO TOLERANCES THAT WOULD MAKE A WATCHMAKER JEALOUS.

*"While on a recent whitetail deer hunt, I compared the NXS 2.5-10 x 24 against a well-known manufacturer's 3.5-10 x 42 riflescope in the black timber near Plains, Montana. When using the two scopes on the same power setting, it was easy for me to determine that the NXS clearly had the upper-hand ability in resolving fine details and providing vivid image quality over the 3.5-10 x 42 model."*

—Dan Lilja, Lilja Precision Rifle Barrels, Inc.



Dan Lilja with his B&C black bear taken in Alaska in May of 2007. Dan used a Nightforce 2.5-10 x 24 NXS compact on a Lilja-barreled .340 Weatherby.

## 2.5-10 x 24 NXS

Those who think a 40 or 50mm objective lens is necessary for outstanding performance will find that the superb clarity, resolution and optical quality of Nightforce lenses allow us to build compact scopes that outperform competitors' scopes with larger objectives. The streamlined design of our 2.5-10 x 24 provides a wide range of mounting options and complements, rather than dominates, a fine hunting rifle. It will easily absorb the pounding of heavy calibers, and will not overwhelm elegant small-caliber firearms. There are no parallax or focusing concerns, and at just 17 ounces and 9.9 inches in length, it is the perfect choice for a mountain rifle.

Big game hunting  
Tactical competition  
Military and law enforcement

## New! 2.5-10 x 32 NXS

To address the requests of hunters for a scope with even greater low-light capability, while retaining the light weight and low profile of our other compacts, we've created an all-new NXS with a 32mm objective lens. At just 12 inches in length, it represents the optimum in size-to-weight performance. A larger exit pupil makes for faster target acquisition, and there are no parallax or focusing issues to slow you down in the field. Like all our compacts, it outperforms most larger scopes, proving that size is no substitute for quality.

*Shown with optional ZeroStop and windage limiter turrets.*

Big game hunting  
Tactical competition  
Military and law enforcement





## 8-32 x 56 Precision Benchrest

General target shooting  
Competition

## 12-42 x 56 Precision Benchrest

Competition

Each of our Precision Benchrest models feature 56mm multi-coated lenses, providing the superior resolution necessary to distinguish fine detail at extremely long ranges. An adjustable objective allows extra-fine focus to adjust parallax from 25 yards to infinity.

Target turrets are calibrated in true .125 MOA (1/8 click) values and can be re-indexed to zero after sighting in.

Both Precision Benchrest riflescopes are equipped with a coil spring plunger return system to maximize tracking accuracy. The eyepiece provides fast reticle focusing, and a glass-etched illuminated reticle provides optimum image/reticle contrast under virtually any lighting conditions.

You have two choices of magnification ranges. But only one choice in the ultimate benchrest riflescopes.

### Another year, another world record with Nightforce

Every year since 2003, Leo Anderson has added more and more titles to his collection of 1000-yard world records. In 2008, through the PA 1000 Yard Club, Leo shot Heavy Gun Class Records for six-match group aggregate (5.0735") and ten-match aggregate (6.1732"). Leo still holds four 2007 world records in Light Gun Class. Leo said, "to shoot the best you have to shoot the best equipment. That's why I shoot Nightforce. Customer service is excellent...Nightforce is a great company to deal with."



## MORE LONG-RANGE RECORDS THAN ANY OTHER RIFLESCOPE.

Since 1992, Nightforce riflescopes have won more records in long-range benchrest competition—including several world records in .50 B.M.G. 1000 yard benchrest—than any other scope on the market. Both Precision Benchrest models include an externally adjustable illuminated reticle, true .125 MOA click values and a broad range of internal adjustment.

These are not "dual-purpose" or hunting scopes with a different name. Each was designed and built from the ground up to answer the specific demands of the long-range benchrest shooter.

### 2006 World Record

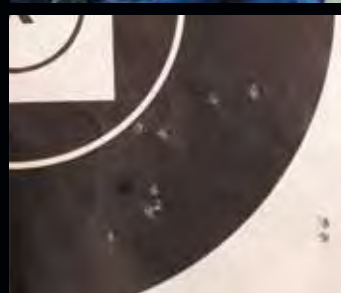
Cody Finch produced a new 1000-yard world record for group (Light Gun Class) in 2006, placing 10 shots in 3.835" with his Nightforce 12-42 x 56. "I honestly think it's the best scope out there," he said. "If you want to win at this game, you'd better use a Nightforce."



### 2003 World Record

"The superior image detail, quality and precision adjustments on my Nightforce 12-42 x 56 was exactly the confidence builder I needed to secure the 1000-yard benchrest world record, for group, in 2003-2006 (Light Gun class). I am convinced that without Nightforce, there wouldn't have been a ten-shot, 4.2275" group at 1000 yards, and no world record for me."

—Kyle Brown



### F-Class records fall

Charles Ballard had a good year. In 2008 he won the U.S. F-Class Nationals, the North Carolina State F-Class Championship, the NRA Long Range Regional Championships (F-Class Open Div.), and set a world record 200-13x at 1000 yards. That's on top of his two 2007 600- and 1000-yard national records. "My 12x42 Nightforce played a huge part," Charles said. "The 1/8 MOA adjustment and high magnification are must on the new reduced F-Class targets. Nightforce scopes have flawless tracking, lash-free parallax adjustment, superior resolution and unequalled light transmission. Combined with the unobstructed view of the NP-2DD reticle, and you have the finest F-Class rifle scope available."



# THE ONLY POSSIBLE WAY TO IMPROVE A NIGHTFORCE SCOPE.



### Nightforce one-piece steel bases

An integral recoil lug machined on the bottom of the base provides a precise fit when bedded to the rifle's action, preventing any movement of the base or recoil stress on screws holding the base to the receiver.

Our one-piece bases are machined to exact Picatinny Mil. Std. 1913 specification rail dimensions. This design allows the same scope to be used on several different rifles, always optimizing eye relief. Choose from 20 or 40 MOA tapers. Designed for right-or left-hand actions, our bases will never interfere with loading or extraction.



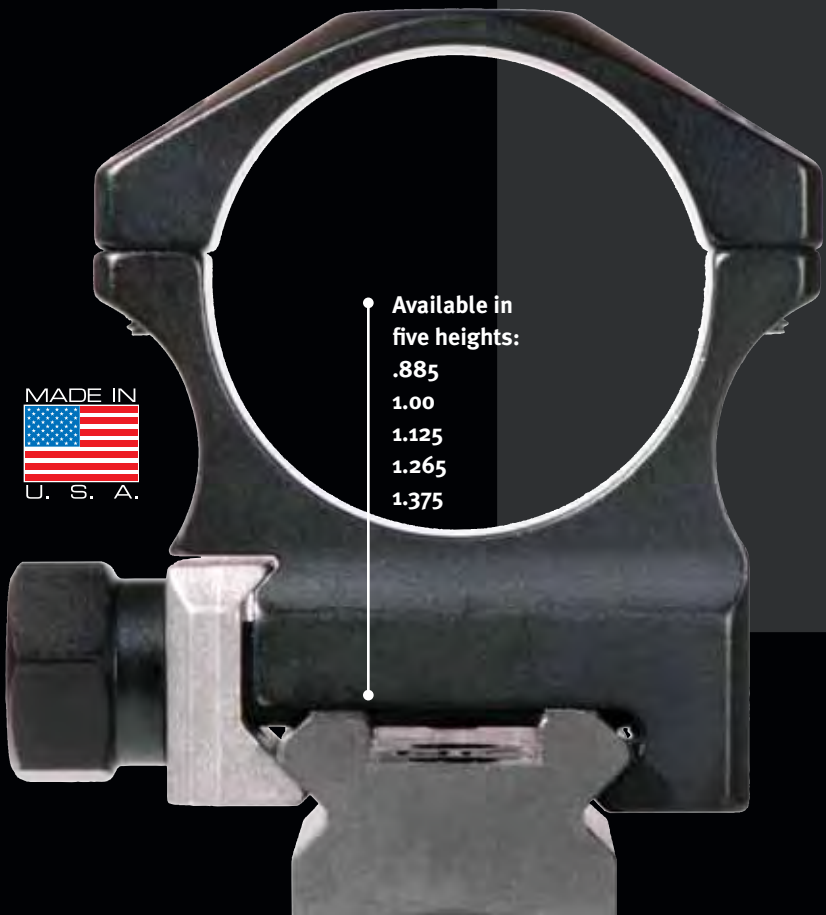
### Nightforce two-piece tapered steel bases

Also made to Picatinny Mil. Std. 1913 specifications, our two-piece bases are machined to an angle of 20 MOA and finished with a matte black mil-spec coating. By selecting the proper taper, you can mount your scope to retain the maximum amount of internal elevation adjustment. This will allow you to shoot further and still maintain a 100 yard or less zero.



### Nightforce gunsmith bases (steel or aluminum alloy)

These Picatinny base blanks allow you to customize the length, height, radius and hole spacing to your specific application. Standard taper is 20 minutes (20 MOA).



### Nightforce steel rings

Designed to fit Picatinny Mil. Std. 1913 scope bases, we machine a load-bearing recoil lug on the grade eight crossbolt. This lug precisely matches the machined cross lug of the Nightforce base, providing perfect alignment and superior accuracy.

We design and produce Nightforce 30mm rings in-house to our own exacting specifications; we believe they are the highest quality rings available on the market.

The finest riflescope in the world is only as good as its mounts. That's why we recommend Nightforce rings and bases to make certain you're getting every bit of performance from your Nightforce scope.

Our bases are CNC machined from a single billet of steel. They are precision machined to match the receiver contour, ensuring straight and true alignment. This also reduces the amount of internal adjustment required when zeroing your rifle. All Nightforce rings and bases exceed military design specifications. They are tough, reliable, utterly precise, and are the perfect match for your Nightforce riflescope.

Available in five heights:  
.885  
1.00  
1.125  
1.265  
1.375



### Ultralite rings Ultralite Unimount

When a tough, reliable mounting system is required without adding substantial weight, Nightforce Ultralite rings are the answer. They feature CNC machined 7075-T6 hard anodized black aluminum bodies and titanium beta series crossbolts and jaws. This unique construction provides exceptional strength, normally not found in lightweight rings. Testing has proven that this combination is actually stronger than steel.

Only 1/3 the weight of steel rings.



**Top Ring Bubble Level/ADIMT**  
Replaces the top ring of our Unimount, Direct Mount and standard rings without a Picatinny base. Available with integral ADIMT or as top ring/bubble level only.



### Unimount

The Nightforce Unimount is designed to remain on the scope at all times, allowing quick removal of the scope or interfacing with different firearms. It is the most accurate Picatinny Mil. Std. 1913 mount available, incorporating a built-in 20 MOA taper to maximize long-range capability. The Unimount is the ultimate mount for attaching to weapons with an integral Picatinny flat top-type receiver.

Precise tolerances ensure that the riflescope is not subjected to stress, strain or bending as the ring screws are tightened. CNC machined from 7075-T6, the Unimount is finished with a matte black coating.



### Direct Mount

This Nightforce system combines a high quality CNC machined 7075-T6 hard anodized aluminum base with an integrated ring design. Built to mount directly to your Remington 700 short or long actions, the 20 MOA taper maximizes internal adjustment. The Direct Mount ensures true alignment and maximum strength for precision shooting. Like all Nightforce mounts, it incorporates an integral recoil lug which prevents any movement of the base or stress on the screws attaching the Direct Mount to the receiver. It is the ultimate in a weight-saving one-piece design.

### Nightforce Angle Degree Indicator

The Nightforce Angle Degree Indicator (ADIMT) takes the guesswork out of uphill and downhill shots. Calibrated in degrees, it gives you an instant readout which you can enter directly into the Nightforce ballistic software program on your pocket PC or use with a pre-printed angle drop chart. The two-piece low-profile Picatinny mount design allows easy installation without removing your scope. Simple, robust, and requiring no batteries, it's the perfect complement to any Nightforce scope for the precision long-range shooter. Available in right- and left-hand versions; for use with one-piece bases.

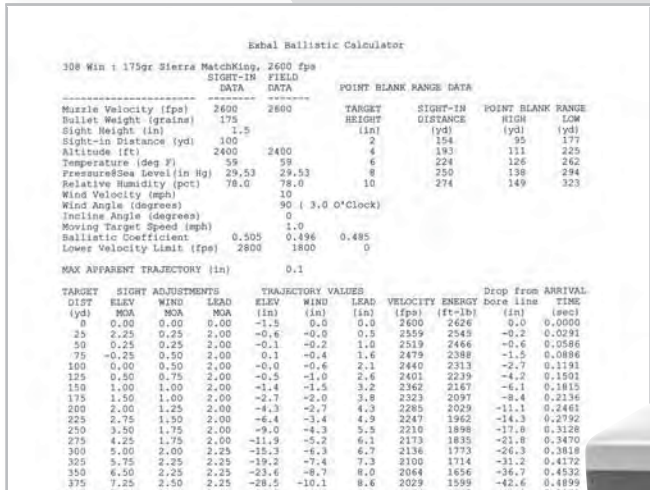
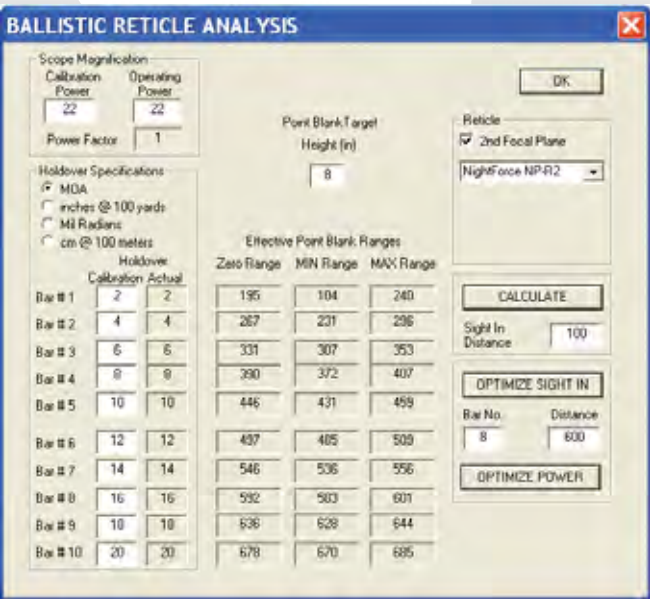




The tools to shoot more accurately. Every shot.

The Nightforce Ballistic Program is the most accurate, easy-to-use software on the market. Now, powerful tools are at your disposal to analyze and correct for all the physical forces that influence a bullet's flight. You will save time, money, and instantly achieve precise drop, lead and windage corrections—even at extreme ranges—that would otherwise require countless hours and hundreds of shots at the range.

You can compile a vast library of data that will let you optimize your equipment, eliminate variables, and greatly increase your ability to place a precise shot every time.



The Nightforce Ballistic Program for Windows®.

The Windows version features the same features and capabilities of the Pocket PC program, plus the ability to input, store, print and export data. Both versions work in tandem and can be purchased individually or as a bundle.

The Nightforce Ballistic Program for Pocket PC.

Take the power of ballistic calculation anywhere you go. It will quickly provide a zero-point solution for a particular target distance, and enable you to overcome any changing conditions in the field.

Now, the most versatile, rugged, powerful handhelds on the market.

Waterproof. Dustproof. Immensely powerful. The Recon and Nomad handheld computers, loaded with the Nightforce Ballistic Program, are the ultimate field tool for instant, precise calculations. Depending upon the model, they offer:

- Easy-to-use Windows Mobile® Version 6, fully compatible with Windows Vista®
- Built to MIL-SPEC 810F and IP67 rating
- Daytime visible screen
- Battery life 10-33 hours (depending on use)
- International charging kit
- Bluetooth capability
- 128 mb RAM, 1 gb Flash memory
- SD card slot, numeric keypad
- 802.11 wireless card
- Holux GPS card

Contact us for complete details and pricing.



YOU CAN SPEND DAYS AND DAYS AT THE RANGE.  
OR A FEW MINUTES WITH OUR SOFTWARE.



Formulates zero-point solutions to hit long range targets

Records and recalls sight-in data for location and conditions

Profiles of rifle/ammunition/atmospheric condition scenarios

Performs all necessary calculations for ranging reticles

Calculates corrections in MOA, I.P.H.Y., Mils and C.P.H.M.

Prints reference cards, plot graphs and drop charts

Comprehensive manufactured ammunition database

Library of more than 500 ballistic coefficients

Export data to Excel spreadsheets

Available for Windows and Pocket PC

Versions sold separately or as a bundle

Affordable for every hunter and shooter

New! Calculates correction for Coriolus effect and spin drift



Improve the performance of factory ammunition.

The most comprehensive database of commercially loaded ammunition of any ballistics program, including Federal, Hornady, Remington, Winchester, Black Hills and more.

Instant access to over 500 ballistic coefficients.

Instant retrieval of ballistic coefficients from bullet manufacturers such as Barnes, Berger, Hornady, Lapua, Lost River Ballistics, Nosler, Sierra, Speer and Swift. You can specify multiple bullet coefficients to accommodate data from Sierra Bullets (which specifies coefficients based on velocity) or from independently developed drag coefficient sources.

Immediate calculations of correction in four measurements.

Corrections in minutes of angle (MOA), inches per hundred yards (I.P.H.Y.), Mil-Radian (Mils) and centimeters per hundred meters (C.P.H.M.).

Print and archive your data.

Interfaces with Excel® spreadsheets, providing you with unlimited capabilities for further analysis at your leisure, such as comparing loads, generating reference cards, plotting graphs and making custom drop charts.

More accurate trajectory validation.

Multi-dimensional technology, known as trajectory validation, makes the Nightforce Ballistic Program more accurate than any other commercially available software.

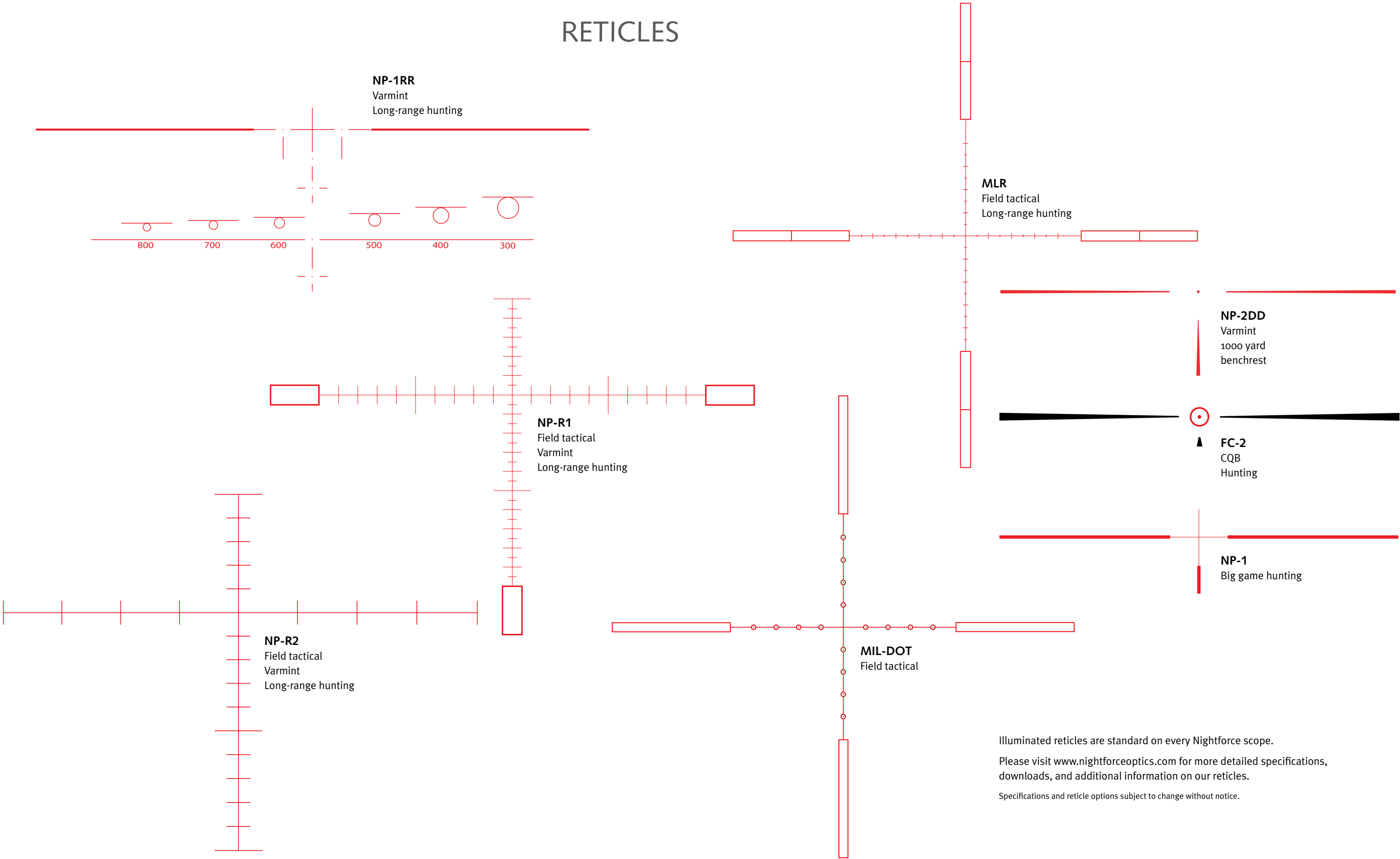
Detailed reticle analysis, too.

Optimize the use of rangefinder ballistic reticles by changing the magnification or sight-in distance so one or more of the reticle's reference bars, dots and/or circles will coincide with where you want to shoot at a specific distance.

PDA not included. System requirements: PC version, Windows ME, NT, 2000 or XP. Palm version: Palm OS 3.5 or higher. Pocket PC version: Pocket PC 2002 or 2003.



# RETICLES

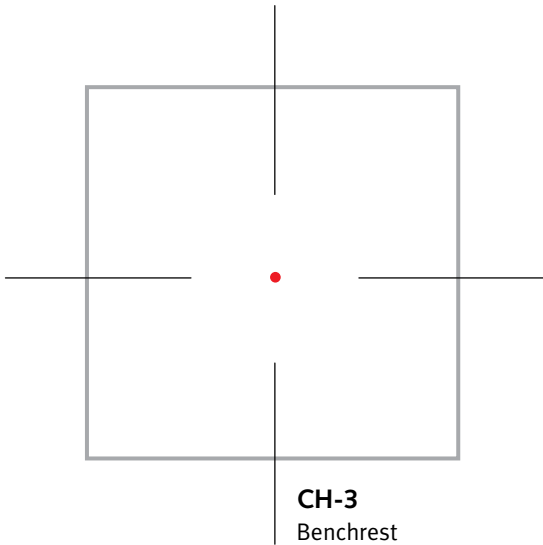
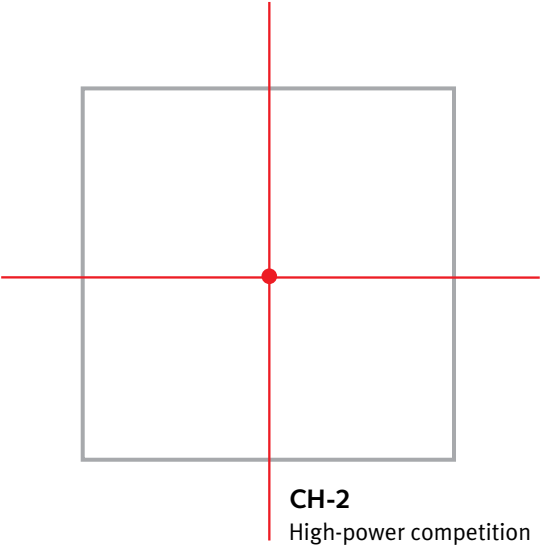


Illuminated reticles are standard on every Nightforce scope.  
Please visit [www.nightforceoptics.com](http://www.nightforceoptics.com) for more detailed specifications,  
downloads, and additional information on our reticles.  
Specifications and reticle options subject to change without notice.



**CH Series**  
Benchrest and competition  
only. Center portions only  
of CH-2 and CH-3 shown  
below, enlarged for clarity.

**CH-1**  
Benchrest



SPECIFICATIONS

Every Nightforce scope is guaranteed against defects in materials and workmanship for as long as you own it. In the unlikely event it would ever need service, normally we will diagnose it in one day and have it on its way back to you soon thereafter. All service work is done in-house at our headquarters in central Idaho.



1-4x24 NXS	2.5-10x24 NXS	2.5-10x32 NXS	3.5-15x50 NXS	3.5-15x56 NXS	5.5-22x50 NXS	5.5-22x56 NXS	8-32x56 NXS	12-42x56 NXS	8-32x56 Benchrest	12-42x56 Benchrest
Objective diameter										
24 mm	24 mm	32 mm	50 mm	56 mm	50 mm	56 mm	56 mm	56 mm	56 mm	56 mm
Exit pupil diameter										
1x: 16 mm	2.5x: 10.1 mm	2.5x: 13.3 mm	3.5x: 14.3 mm	3.5x: 14.5 mm	5.5x: 9.1 mm	5.5x: 10.2 mm	8x: 7.0 mm	12x: 4.7 mm	8x: 5.6 mm	12x: 4 mm
4x: 6 mm	10x: 2.5 mm	10x: 3.3 mm	15x: 3.6 mm	15x: 4.0 mm	22x: 2.3 mm	22x: 2.5 mm	32x: 1.8 mm	42x: 1.3 mm	32x: 1.7 mm	42x: 1.4 mm
Field of view @100 yards										
1x: 100 ft	2.5x: 44 ft	2.5x: 44 ft	3.5x: 27.6 ft	3.5x: 27.6 ft	5.5x: 17.5 ft	5.5x: 17.5 ft	8x: 12.1 ft	12x: 8.2 ft	8x: 9.4 ft	12x: 6.7 ft
4x: 25 ft	10x: 11 ft	10x: 11 ft	15x: 7.3 ft	15x: 7.3 ft	22x: 4.7 ft	22x: 4.7 ft	32x: 3.1 ft	42x: 2.4 ft	32x: 3.1 ft	42x: 2.3 ft
Eye relief										
90 mm/3.5"	95 mm/3.7"	95 mm/3.7"	99 mm/3.9"	97 mm/3.8"	95 mm/3.7"	99 mm/3.9"	98 mm/3.8"	98 mm/3.8"	75 mm/2.9"	75 mm/2.9"
Internal adjustment range										
e: 100 MOA	e: 100 MOA	e: 100 MOA	e: 110 MOA	e: 110 MOA	e: 100 MOA	e: 100 MOA	e: 65 MOA	e: 45 MOA	e: 50 MOA	e: 40 MOA
w: 100 MOA	w: 100 MOA	w: 100 MOA	w: 80 MOA	w: 80 MOA	w: 60 MOA	w: 60 MOA	w: 45 MOA	w: 35 MOA	w: 50 MOA	w: 40 MOA
Click value										
.250 MOA	.250 MOA	.250 MOA	.250 MOA	.250 MOA	.250 MOA	.250 MOA	.250 MOA	.250 MOA	.125 MOA	.125 MOA
.1 Mil-Rad	.1 Mil-Rad	.1 Mil-Rad	1.0 MOA .1 Mil-Rad	1.0 MOA .1 Mil-Rad	1.0 MOA .1 Mil-Rad	1.0 MOA .1 Mil-Rad				
Tube diameter										
30 mm/1.18"	30 mm/1.18"	30 mm/1.18"	30 mm/1.18"	30 mm/1.18"	30 mm/1.18"	30 mm/1.18"	30 mm/1.18"	30 mm/1.18"	30 mm/1.18"	30 mm/1.18"
Ocular lens diameter										
33 mm	33 mm	33 mm	36 mm	36 mm	36 mm	36 mm	36 mm	36 mm	36 mm	36 mm
Overall length										
8.8"	9.9"	12"	14.7"	14.8"	15.1"	15.2"	15.9"	16.1"	16.6"	17"
Weight										
17 oz	17 oz	19 oz	30 oz	31 oz	31 oz	32 oz	34 oz	34 oz	36 oz	36 oz
Mounting length										
5.4"	6.6"	5.7"	6.1"	5.8"	6.6"	6.6"	6.7"	6.9"	5.5"	5.9"
Reticles available										
NP-1	NP-1	NP-1	NP-1RR	NP-1RR	NP-1RR	NP-1RR	NP-1RR	NP-1RR	NP-1RR	NP-1RR
FC-2	NP-R2	NP-R2	NP-1	NP-1	NP-1	NP-1	NP-1	NP-1	NP-1	NP-1
MIL-DOT	FC-2	FC-2	NP-R1	NP-R1	NP-R1	NP-R1	NP-R1	NP-R1	NP-R2	NP-R2
	MIL-DOT	MIL-DOT	NP-R2	NP-R2	NP-R2	NP-R2	NP-R2	NP-R2	NP-2DD	NP-2DD
			NP-2DD	NP-2DD	NP-2DD	NP-2DD	NP-2DD	NP-2DD	CH1	CH1
			MLR	MLR	CH1	CH1	CH1	CH1	CH2	CH2
			MIL-DOT	MIL-DOT	CH2	CH2	CH2	CH2	CH3	CH3
					CH3	CH3	CH3	CH3	MIL-DOT	MIL-DOT
					MLR	MLR	MLR	MLR		
					MIL-DOT	MIL-DOT	MIL-DOT	MIL-DOT		



Nightforce is located in Orofino, Idaho. It might seem odd to find such a state-of-the-art facility in a small town, but it is an ideal location for intense testing of our riflescopes.

Nightforce was created in 1992 with one goal in mind; to build the finest riflescopes on the market for the professional shooter. The same qualities that have made Nightforce the choice of professionals have now created a dedicated following among hunters and serious shooters.

Try one, and you will understand why.



# NIGHTFORCE™

## North America and military sales:

Nightforce Optics, Inc.  
1040 Hazen Lane  
Orofino, ID 83544  
tel 208.476.9814  
fax 208.476.9817

**NightforceOptics.com**

## International sales:

Lightforce Australia PTY LTD.  
28 Orsmond Street  
Hindmarsh, SA 5007  
Australia  
tel 08.8340.2766  
(International +618.8340.2766)  
fax 08.8346.0504  
(International +618.8346.0504)  
**Lightforce.com**

## Guaranteed for life.

Every Nightforce riflescope comes with a Limited Lifetime Warranty which covers mechanical defects in materials and workmanship in the optical and mechanical components. In the event of a covered defect in materials or workmanship, we will either repair the riflescope or replace it at no charge with a comparable product at our discretion.

Exclusions include intentional or accidental damage, abuse, misuse, unauthorized modifications or repairs, and improper mounting.

Contact us or visit our website for complete details.



1-4 x 24 NXS



2.5-10 x 24 NXS



2.5-10 x 32 NXS



3.5-15 x 50 NXS



3.5-15 x 56 NXS



5.5-22 x 50 NXS



5.5-22 x 56 NXS



8-32 x 56 NXS



12-42 x 56 NXS



8-32 x 56 Precision Benchrest



12-42 x 56 Precision Benchrest